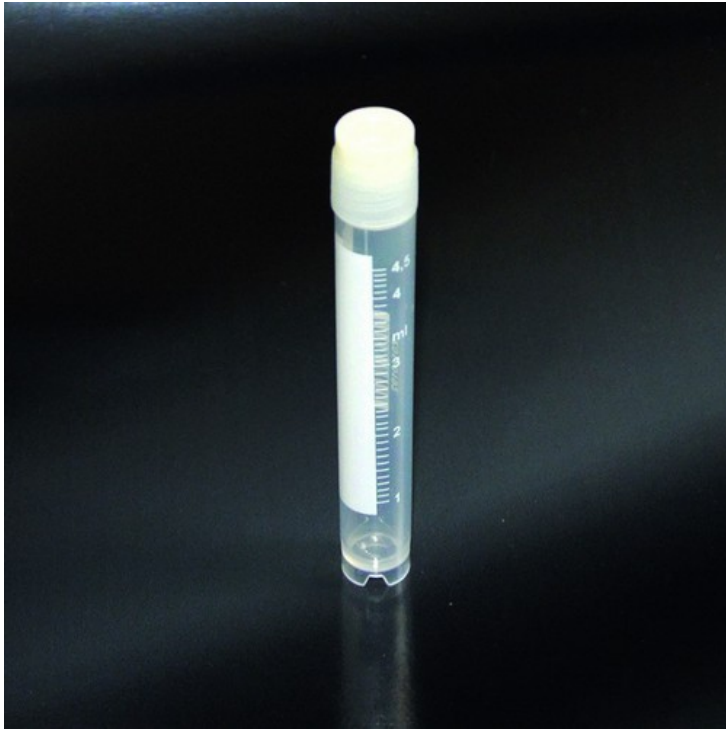




criotubi external thread 5 ml, PP silk-screen printed with basic sterile

criotubi phil. EC external Ø 12.5 x 90, 5 ml PP-screened with the stopper inserted with the base sterile - bags of 50 pieces Cf.1.000 pcs

**Product codes:**

Reference: 64 854 9471

Product gallery:**Product description:**

Cryotube polypropylene autoclavable for the preservation of biological material up to temperatures of -196 °C (-320 °F). Available with either a cylindrical bottom with a base suitable to fit in the workstation and the consequent easy and fast screwing of the cap with one hand. Large writing area white for the identification of the sample and graduated scale silk-screened on the tube. Bar code of type CODE 128 printed directly on the tubes ideal for processing and the automatic storage of the samples may be read with the most common readers of barcode. The cap of the new concept has a star shape designed for use with capping machines. Caps with external thread with seal in rubber injected directly during the production which guarantees the absolute safety, avoiding any possible contamination and loss of liquids. The devices are free of human DNA Dnase Rnase ATP, PCR inhibitors, and Apirogeni. Non-cytotoxic non-hemolytic.



Product features:

CRS - AUTOCLAVABLE: you
CRS - TYPE: external thread
CRS - CAPACITY MAX: 5ml
CRS - TEMPERATURE MINIMUM: -196°C
CRS - SELF STANDING: you
CRS - CAP: star
CRS - CAP: with gasket
CRS - PURITY: DNA, RNA, DNase, RNase FREE
CRS - PURITY: DNA
CRS - PURITY: non-hemolytic
CRS - PURITY: non-cytotoxic
CRS - PURITY: pyrogen FREE
CRS - PURITY: inhibitors PCR FREE
CRS - PURITY: DNase, RNase FREE
CRS - STERILITY: you
CRS - HEIGHT: 88mm
CRS - DIAMETER: 12.50mm
CRS - AREA WRITABLE: you
CRS - SIZED: you
CRS - MATERIAL: PP
CRS - SUITABLE FOR: freezing
CRS - SUITABLE FOR: sampling
CRS - SUITABLE FOR: storage
CRS - SUITABLE FOR: cryogenics
CRS - TRACEABILITY: bar code side
CRS - FUND: round